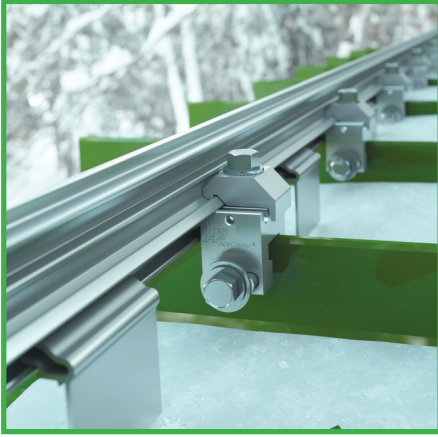




Torque Specs: Snow

for the AceClamp family of products



Color Snap® Installation

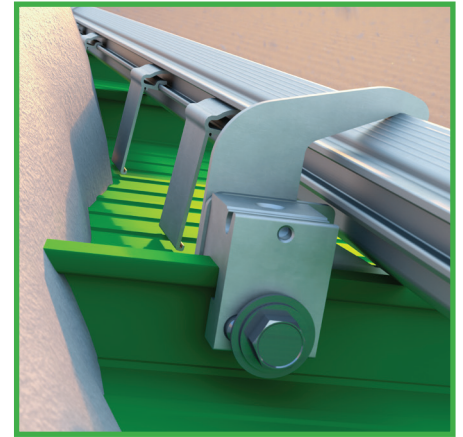
9/16" Hex Bolts w/Top Block
(190 in-lbs max)



Color Snap®-M Installation

9/16" Hex Bolts w/Top Block
(190 in-lbs max)

For fastening the base unit through to the deck, follow the recommendations of the roof system manufacturer. Do not over drive fasteners or you may crease the membrane.



Snow Titan™ Installation

9/16" Hex Bolts
(190 in-lbs max)

Please refer to the below chart for the appropriate torque specs. **Do NOT tighten with impact gun.** For other styles or materials not shown here, feel free to contact the Engineers at AceClamp for further assistance.

PANEL STYLE	PANEL MATERIAL	PANEL THICKNESS	ACECLAMP	TORQUE (in-lbs)
snap-lock	steel	24 ga	A2® or A2®N	195
snap-lock	aluminum	0.040	A2® or A2®N	165
snap-lock	zinc	0.8mm	A2®	165
single-lock	steel	22 ga or 24 ga	A2®	195
single-lock	aluminum	0.032/0.040	A2®	165
double-lock	steel	22 ga or 24 ga	A2®	195
quad-lock	steel	22 ga or 24 ga	ML®	175
t-panel	steel	22 ga or 24 ga	ML®	175
zip-rib	steel	22 ga or 24 ga	ML®	175
zip-rib	aluminum	0.050	ML®	150
zip-rib	aluminum	0.032/0.040	ML®	135
nail-base 1.5"	steel	24 ga	A2®N	195
nail-base 1.0"	steel	24 ga	A2®Nw	165

*Photos shown are for representative purposes only. Actual product may vary. Design subject to change without notice. Always use OSHA approved safety equipment and procedures when working on a roof. Not responsible for typographical errors.

**ACE
CLAMP®**
Innovative Roofing Solutions™

a product of
PMG Industries Inc

87 Spring Lane Plainville, CT 06062 • P: 860.351.0686 F: 860.351.0689 www.aceclamp.com V062322