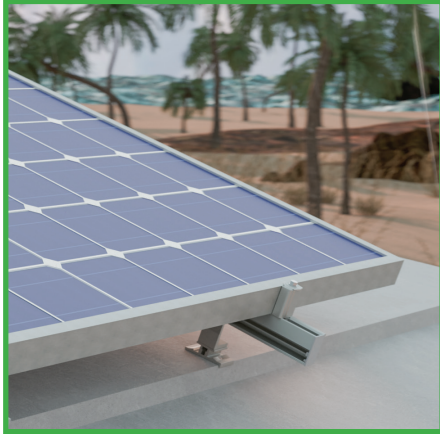




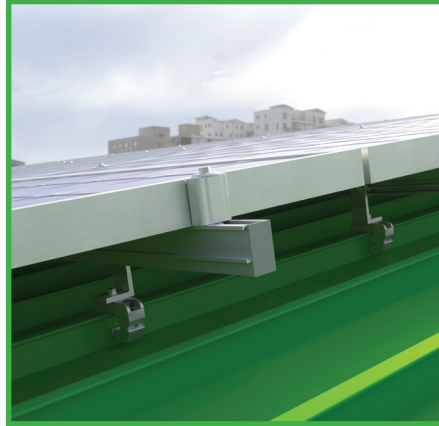
Torque Specs: Solar

for the AceClamp family of products



Solar Snap® ISR Installation

10/3" ISR Base Screws
(60 in-lbs max)



Solar Snap® SSMR Installation

Refer to table below



A2® Solar PV Kit Installation

Kit Mounting Post - 3/16" Hex Drive
(100 in-lbs max)
9/16" Hex Nut securing PV Panel
(100 in-lbs max)

Please refer to the below chart for the appropriate torque specs. **Do NOT tighten with impact gun.** For other styles or materials not shown here, feel free to contact the Engineers at AceClamp for further assistance.

PANEL STYLE	PANEL MATERIAL	PANEL THICKNESS	ACECLAMP	TORQUE (in-lbs)
snap-lock	steel	24 ga	A2® or A2®N	195
snap-lock	aluminum	0.040	A2® or A2®N	165
snap-lock	zinc	0.8mm	A2®	165
single-lock	steel	22 ga or 24 ga	A2®	195
single-lock	aluminum	0.032/0.040	A2®	165
double-lock	steel	22 ga or 24 ga	A2®	195
quad-lock	steel	22 ga or 24 ga	ML®	175
t-panel	steel	22 ga or 24 ga	ML®	175
zip-rib	steel	22 ga or 24 ga	ML®	175
zip-rib	aluminum	0.050	ML®	150
zip-rib	aluminum	0.032/0.040	ML®	135
nail-base 1.5"	steel	24 ga	A2®N	195
nail-base 1.0"	steel	24 ga	A2®Nw	165

*Photos shown are for representative purposes only. Actual product may vary. Design subject to change without notice. Always use OSHA approved safety equipment and procedures when working on a roof. Not responsible for typographical errors.

ACE CLAMP®
Innovative Roofing Solutions™

a product of
PMG Industries Inc

87 Spring Lane Plainville, CT 06062 • P: 860.351.0686 F: 860.351.0689 www.aceclamp.com V110520

L-Foot Bolt to Clamp
(125 in-lbs max)

