

# ACE CLAMP®

PMC Industries Inc.

## 1. Product Name

- AceClamp® A2® Snow Retention System

## 2. Manufacturer

PMC Industries, Inc.  
87 Spring Lane  
Plainville CT 06062  
Phone: 860-351-0686  
Fax: 860-351-0689  
Email: [info@aceclamp.com](mailto:info@aceclamp.com)  
Web: [www.aceclamp.com](http://www.aceclamp.com)

## 3. Product Description

### Basic Use

A2 AceClamps are used to secure snow retention brackets and bars to sloped SSMRs (standing seam metal roofs). Used in snow-prone areas, snow retention has two primary benefits:

- Prevents snow from sliding off roofs and causing damage to pedestrians or structures below
- Retains snow on a metal roof structure for insulation purposes, increasing R-values

Typical installation would be a one-, two- or three-bar rail system installed along the lower section of the roof, across the entire length. Some applications may warrant a second and third row across the entire roof if regional snow loads require it.

### Composition and Materials

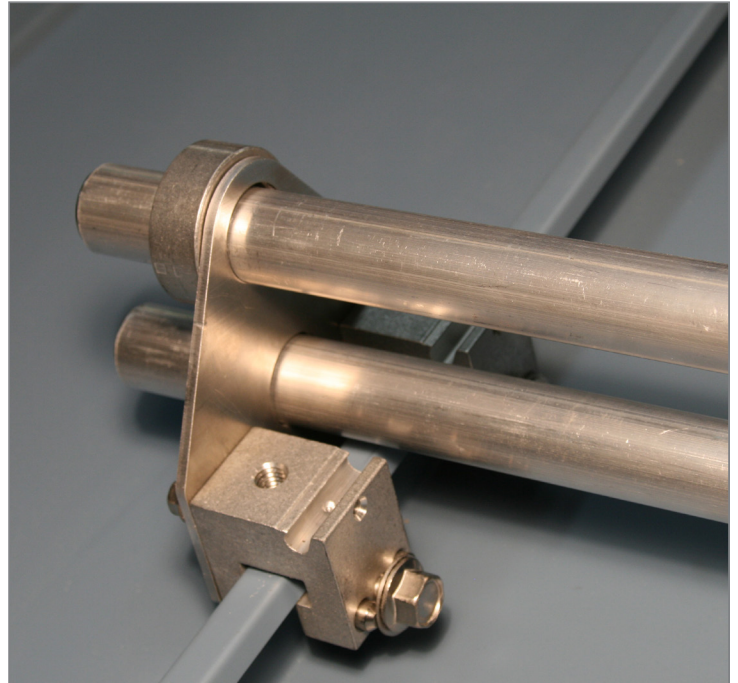
Most components are extruded 6061-T6 aluminum alloy, stainless steel 300 series or brass (B16/16M-10) can be special-ordered for copper roofs to prevent metallurgical incompatibility.

### Components

- A2 clamp: 6061-T6 aluminum alloy
- Brackets: 6061-T6 aluminum alloy
  - One-hole
  - Two-hole
  - Three-hole
- Snow rails: 6061-T6 aluminum alloy
- Couplers: 6061-T6 aluminum alloy
- End collars: 5052 aluminum alloy
- End caps: 300 series stainless steel (18-8)
- Ice flags: 5052 aluminum alloy
- Push pins and screws: 300 series stainless steel (18-8)

### Benefits

- Installs in half the time of other clamps
- Designed specifically for contractor needs and profitability



- Shipped fully assembled; saves time and lowers project costs
- No set screws to mar the panel finish and jeopardize the manufacturer's warranty
- Reduce loss and waiting time: Inventory your clamps with us and order just-in-time shipping to jobsites
- Certified staff with convenient in-house training
- Manufactured locally, so they're always available
- Instant support from in-house engineering services
- Rigorous testing by registered third-party labs ensures quality and performance

### Color/Finish

#### Color

All products come in stock aluminum finish.

Systems can be powder-coated to a customer's specific color match. PMC Industries, Inc. uses the European RAL System, a standard color system for paint and coatings. The colors are used for architecture, construction and road safety.

#### Finish

Our products are tumbled so they present a smooth, no burr, matte finish.

### Product Limitations

Product is to be used as specified from the manufacturer, AceClamp and PMC Industries. Product can only be fastened to a secure substrate and properly installed roof panel. Please consult with panel manufacturer for specific installation instructions.

AceClamps are not a personal restraint or meant to be used as a security safety anchor.

## 4. Technical Data

### Applicable Standards

#### ASTM International (ASTM)

- **ASTM A582/12** Standard Specification for Free-Machining Stainless Steel Bars
- **ASTM B209** Standard Specification for Aluminum and Aluminum Alloy Sheet and Plate
- **ASTM B221** Standard Specification for Aluminum and Aluminum-Alloy Extruded Bars, Rods, Wire, Profiles and Tube

#### International Standards Organization (ISO)

- **ISO 9001:2008** Adherence to GMP (Good Manufacturing Practices) and overall QMS (Quality Management Systems) provides the framework to establish a continuous improvement environment, which includes quality planning requirements along with policies, objectives and quantifiable targets

### Environmental

All AceClamp products are 100 percent recyclable contributing to potential reductions in the solid waste stream.

### Weight-bearing Information

Please consult with PMC Industries, Inc. for regional snow load calculations.

## 5. Installation

PMC Industries, Inc. provides installation instructions for the snow retention systems. Please contact manufacturer for complete information.

Installation instructions for the clamps and snow retention systems are [here](#).

## 6. Availability and Cost

Please contact manufacturer for availability and pricing.

## 7. Warranty

AceClamp carries a limited 20-year warranty against product defects.

## 8. Maintenance

Both aluminum and stainless steel will survive the harshest environments so little-to-no maintenance is required. Although, it is advisable to periodically check positioning after heavy snow loading.

## 9. Technical Services

On-site engineering support is available. Phone support is available at 860-351-0686.

## 10. Filing Systems

- ConstructConnect
- CAD files
- Additional product information is available from the manufacturer upon request ↪